

BPSC 66th Prelims Question Paper (Solved)

#1. The radiations used in the treatment of muscle ache are

- (A) infrared
- (B) microwave
- (C) UV
- (D) X-ray
- (E) None of the above/More than one of the above

Ans: (A)

Solution: This is the electromagnetic spectrum beyond the visible range 3900 angstroms. Every warm object emits Infrared. Its uses are in the treatment of muscle pain, easing tension, cooking, and also in short-range communication i.e. remote, etc.

#2. The total resistance of a circuit having two parallel resistors is 1.403 kilo-ohm. If one of the resistors is 2.0 kilo-ohm, then the other resistor will be

- (A) 1.403 kilo-ohm
- (B) 2.0 kilo-ohm
- (C) 3.403 kilo-ohm
- (D) 4.70 kilo-ohm
- (E) None of the above/More than one of the above

Ans: (D)

Solution: Let the Resistance of Individual Resistors be R1 and R2 ohms.

So, The Total Resistance in parallel combination will be $(R1 \times R2) / (R1 + R2)$ Ohms.

Here, R1 = 2 KOhm, and Total Resistance is 1.403 KOhm

Just Put this value of R1 in the following Equation to get R2.

$$(2R2) / (2 + R2) = 1.403$$

Hence, R2 = 4.70 KOhm.

#3. On heating, the resistance of a semiconductor

- (A) increases
- (B) decreases
- (C) remains same
- (D) first increases and then decreases
- (E) None of the above/More than one of the above

Ans: (B)

Solution: Increasing the temperature of intrinsic semiconductors provides more thermal energy for electrons to absorb and thus will increase the number of conduction electrons. This ultimately leads to a decrease in Resistance.

#4. Faraday constant

- (A) depends on the amount of the electrolyte
- (B) depends on the current passed in the electrolyte
- (C) depends on the volume of the solvent in which the electrolyte is dissolved
- (D) is a universal constant
- (E) None of the above/More than one of the above

Ans: (D)

Solution: Faraday constant is universal constant, the value of **Faraday constant (F)** = 96500 C mol^{-1}

Do you know from where you get this value?

Refer to Coulomb's law equation.

#5. 'Light-year' is a unit of

- (A) time
- (B) speed
- (C) distance

(D) intensity of light

(E) None of the above/More than one of the above

Ans: (C)

Solution: A light-year is the unit of distance.

1 Light Year \approx **9.461 trillion kilometers**

#6. Which of the following does not change when light travels from one medium to another?

(A) Velocity

(B) Wavelength

(C) Frequency

(D) Refractive index

(E) None of the above/More than one of the above

Ans: (C)

Solution: The properties of light like wavelength, speed of light changes when it travels from one medium to another.

The frequency of Light remains unchanged.

#7. The velocity of electromagnetic waves is

(A) $3 \times 10^8 \text{ ms}^{-1}$

(B) $3 \times 10^7 \text{ ms}^{-1}$

(C) $3 \times 10^6 \text{ ms}^{-1}$

(D) $3 \times 10^5 \text{ ms}^{-1}$

(E) None of the above/More than one of the above

Ans: (A)

Solution: It is the same as the speed of light i.e. $3 \times 10^8 \text{ m/s}$.

#8. The first man who placed his foot on the moon is

- (A) Leonov
- (B) Neil Armstrong
- (C) Michael Collins
- (D) James Van Allen
- (E) None of the above/More than one of the above

Ans: (B)

Solution: Apollo 11 was the spaceflight that first landed humans on the Moon in 1969.

Armstrong became the first person to step onto the lunar surface.

#9. The number of neutrons in the nucleus of plutonium nuclide (${}_{94}\text{Pu}242$) is

- (A) 94
- (B) 148
- (C) 242
- (D) 336
- (E) None of the above/More than one of the above

Ans: (B)

Solution: The nucleus has two components i.e proton & neutron. The no. of protons is the atomic number.

Here the atomic number is 94. So, the no. of the neutron is $242 - 94 = 148$.

#10. The highest viscosity among the following is of

- (A) water
- (B) air
- (C) blood
- (D) honey

(E) None of the above/More than one of the above

Ans: (D)

Solution: Among the given options, Honey has the highest viscosity. It decreases with increase in temperature.

The unit of viscosity is kg/m/s.

#11. Milk is a poor source of

(A) calcium

(B) protein

(C) vitamin C

(D) carbohydrate

(E) None of the above/More than one of the above

Ans: (C)

Solution: Milk is rich in calcium, vitamin-D, proteins, phosphorus, magnesium, potassium, vitamin-B12, and Zinc. Carbohydrate is also present in little amount.

It is a poor source of Vitamin C.

#12. The breath test conducted by police to check drunken driver has which one of the following on the filter paper?

(A) Potassium dichromate-sulfuric acid

(B) Potassium permanganate-sulfuric acid

(C) Silica gel coated with silver nitrate

(D) Turmeric

(E) None of the above/More than one of the above

Ans: (A)

Solution: When alcohol vapor makes contact with the yellow dichromate-coated crystals, the color changes from yellow to green. The degree of the color change is directly proportional to the degree of alcohol in the one's breath.

#13. Glucose is converted to ethyl alcohol by the enzyme

- (A) maltase
- (B) invertase
- (C) zymase
- (D) diastase
- (E) None of the above/More than one of the above

Ans: (C)

Solution: Zymase is an enzyme complex that acts as a catalyst during the fermentation of sugar into ethanol and carbon dioxide. It is found in yeasts. So, Glucose is converted into ethyl alcohol in the presence of **Zymase**.

#14. Limewater is turned milky by

- (A) CO
- (B) CO₂
- (C) O₂
- (D) O₃
- (E) None of the above/More than one of the above

Ans: (B)

Solution: When carbon dioxide (CO₂) is passed through lime water CaCO₃.H₂O is formed.

#15. The incomplete burning of petrol and diesel produces

- (A) nitric oxide
- (B) nitrogen dioxide
- (C) carbon dioxide
- (D) carbon monoxide
- (E) None of the above/More than one of the above

Ans: (D)

Solution: Any incomplete combustion produces **carbon monoxide**.

#16. The pH of a solution changes from 3 to 6. The H⁺ ion concentration will

- (A) Increase 3 times
- (B) decrease 3 times
- (C) decrease 10 times
- (D) decrease 1000 times
- (E) None of the above/More than one of the above

Ans: (D)

Solution: The concentration of **hydrogen ions is inversely related to its pH** and can be measured on the pH scale. Therefore, the more hydrogen ions present, the lower the pH; conversely, the fewer hydrogen ions, the higher the pH.

Initially pH = 3 so, $[H] = 10^{-3}$.

Now, pH = 6, so, $[H] = 10^{-6}$.

So, the concentration of Hydrogen Ion decreases by 1000 times.

#17. A mixture of sand and naphthalene can be separated by

- (A) sublimation
- (B) distillation
- (C) chromatography
- (D) fractional distillation
- (E) None of the above/More than one of the above

Ans: (A)

Solution: Sublimation is the process of conversion of solid-state directly into the gaseous form, without even passing through the liquid phase.

<https://licchavilyceum.com>

#18. The numbers of sigma and pi bonds in benzene are

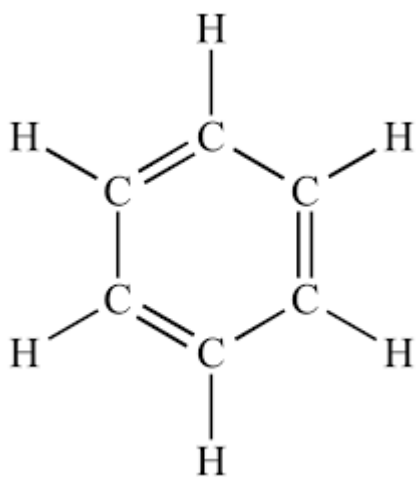
- (A) 3, 3
- (B) 3, 6
- (C) 12, 3
- (D) 12, 6
- (E) None of the above/More than one of the above

Ans: (C)

Explanation: Benzene has molecular formula C_6H_6 (see the figure).

There is presence of a double bond in between **alternate** carbon atoms and each carbon is attached to two carbon atoms by means of a **single bond** and a **double bond** and a **hydrogen atom by a single bond**.

So there are a total of 12 sigma bonds and 3 pi bonds in benzene.



#19. The elements present in urea are

- (A) C, H, O
- (B) C, N, O
- (C) C, H, N
- (D) C, H, N, O
- (E) None of the above/More than one of the above

Ans: (D)

Solution: Urea's Formula is CH_4N_2O

#20. The poorest conductor of heat among the following is

- (A) copper
- (B) lead
- (C) mercury
- (D) zinc
- (E) None of the above/More than one of the above

Ans: (C)

Solution: At room temperature, mercury is a thick, silvery liquid with a very high density and **low heat conductivity**. It has a relatively high electrical conductivity.

#21. The vitamin which is effective in blood clotting is

- (A) vitamin A
- (B) vitamin B
- (C) vitamin D
- (D) vitamin K
- (E) None of the above/More than one of the above

Ans: (D)

Solution: Vitamin K helps to make various proteins that are needed for blood clotting and the building of bones.

#22. The female sex hormone is

- (A) estrogen
- (B) androgen
- (C) insulin
- (D) oxytocin
- (E) None of the above/More than one of the above

Ans: (A)

Solution: Hormones are natural substances produced in the body. They help to relay messages between cells and organs and affect many bodily functions. The two main female sex hormones are estrogen and progesterone. Although testosterone is considered a male hormone, females also produce it.

#23. The Nobel Prize for developing treatment of Parkinson's disease was given to

- (A) Arvid Carlsson
- (B) John F. Enders
- (C) Robert B. Laughlin
- (D) Walter Kohn
- (E) None of the above/More than one of the above

Ans: (A)

Solution: Carlsson's research on the brain's chemical signals and the resulting treatment for Parkinson's disease earned him the 2000 Nobel Prize in Physiology or Medicine, which he shared with Paul Greengard and Eric R. Kandel.

<https://licchavilyceum.com/>

#24. The malfunctioning of thyroid gland is due to the deficiency of

- (A) vitamin A
- (B) calcium
- (C) iodine
- (D) iron
- (E) None of the above/More than one of the above

Ans: (C)

Solution: Iodine is used by the thyroid to produce hormones. **Hypothyroidism** results when the thyroid gland fails to produce enough hormones.

#25. The sensitive area of the human tongue to bitterness is

- (A) tip

(B) middle part

(C) posterior part

(D) edge

(E) None of the above/More than one of the above

Ans: (C)

Solution: The bitterness can be tasted at the posterior part of the tongue which is one of four taste receptors of the tongue. It is located toward the back of the tongue.

#26. Ginger is a stem and not root because

(A) it stores food material

(B) it has nodes and internodes

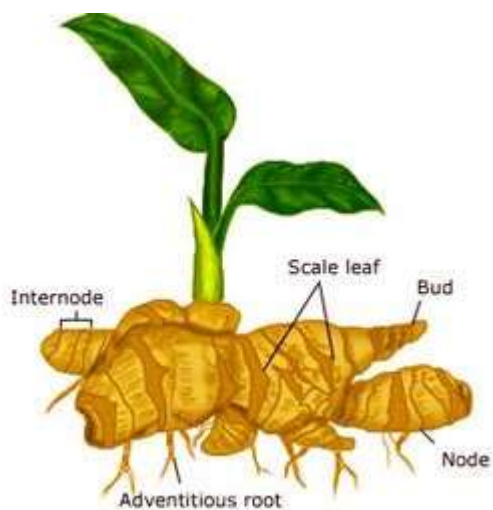
(C) it grows horizontally in the soil

(D) it lacks chlorophyll

(E) None of the above/More than one of the above

Ans: (B)

Solution: The ginger are considered as stems and not as roots as it **contains nodes and internodes**. They are known to lack chlorophyll. The nodes and internodes are able to grow into leaves or stalks of leaves.



Ginger

#27. The sweetest sugar among the following is

- (A) fructose
- (B) glucose
- (C) maltose
- (D) sucrose
- (E) None of the above/More than one of the above

Ans: (A)

Solution: Fructose is the sweetest carbohydrate sugar. It is found in fruits, honey etc. It is also called the fruit sugar.

#28. Among the following, which is not a true fruit?

- (A) Apple
- (B) Grape
- (C) Date
- (D) Plum
- (E) None of the above/More than one of the above

Ans: (A)

Solution: **Apple** is not a true fruit. A fruit is always ripened ovary. Inside the apple fruit, the structure holding the seeds is actually the fruit while the edible fleshy part is actually the swollen wall material of ovary.

#29. Legumes are highly nutritious because they are rich in

- (A) Fat
- (B) Protein
- (C) Oil
- (D) Starch

(E) None of the above/More than one of the above

Ans: (B)

Solution: Legumes are rich in **potassium, magnesium, and fiber**, all nutrients that have a positive impact on blood pressure management.

Legumes are nutritionally valuable, providing proteins with essential amino acids, complex carbohydrates and dietary fibre .

#30. Clove, a spice, is obtained from which part of the plant?

(A) Fruit

(B) Stem

(C) Root

(D) Flower bud

(E) None of the above/More than one of the above

Ans: (D)

Solution: Cloves are **the aromatic flower buds** of a tree in the family Myrtaceae, *Syzygium aromaticum*. They are native to the Maluku Islands (or Moluccas) in Indonesia, and are commonly used as a spice.

#31. Who has been appointed by the board of control for cricket in India as the head of All India women's Selection Committee?

(A) Mithu Mukherjee

(B) Neetu David

(C) Renu Margrate

(D) V. Kalpana

(E) None of the above/More than one of the above

Ans: (B)

Solution: The Board of Control for Cricket in India (BCCI) is the governing body for cricket in India and is under the jurisdiction of Ministry of Youth Affairs and Sports. **Neetu David** has been appointed as the chairman of All-India Women's Selection Committee.

#32. Who has won the Women's Singles US Open Tennis Tournament, 2020?

- (A) Naomi Osaka
- (B) Bianca Andreescu
- (C) Sofia Kenin
- (D) K. Pliskova
- (E) None of the above/More than one of the above

Ans: (A)

Solution: Naomi Osaka defeated Victoria Azarenka in the final, 1–6, 6–3, 6–3 to win the Women's Singles tennis title at the 2020 US Open. It was her second US Open title and third major title overall.

#33. Which athlete scored first Position in the London Marathon held on 4th October, 2020?

- (A) Eluid Kipchoge
- (B) Shura Kitata
- (C) Vincent Kipchumba
- (D) Sisay Lemma
- (E) None of the above/More than one of the above

Ans: (B)

Solution: In London Marathon 2020, The men's elite race was won by Ethiopian Shura Kitata, and the women's event was won by Kenyan Brigid Kosgei.

#34. Which Indian Cricketer along with M. S. Dhoni announced retirement from the International Cricket on 15th August, 2020?

- (A) Suresh Raina
- (B) Harbhajan Singh
- (C) Bhuvneshwar Kumar
- (D) Rohit Sharma

(E) None of the above/More than one of the above

Ans: (A)

Solution: Indian Former Skipper MS **Dhoni** And Suresh Raina **Announces Retirement** From **International Cricket**.

#35. Who has been appointed as the Chairperson of the National School of Drama recently?

(A) Mahesh Bhatt

(B) Akshay Kumar

(C) Anupam Kher

(D) Paresh Rawal

(E) None of the above/More than one of the above

Ans: (D)

Solution: Paresh Rawal has been appointed Chairperson of the National School of Drama (NSD), the country's premier institute for theatre students, in Delhi.

#36. Who is the Chairman of the Defence Research and Development Organization?

(A) Surjeet Singh Deswal

(B) Dr. G. Satheesh Reddy

(C) Arvind Saxena

(D) Charanjit Singh Attra

(E) None of the above/More than one of the above

Ans: (B)

Solution: Dr G Satheesh Reddy, Secretary, Department of Defence R&D and Chairman, Defence Research and Development Organisation (DRDO), spearheads indigenous development of defence systems and technologies

#37. For which discipline, Dr. Bushra Ateeq and Dr. Ritesh Agarwal have been selected for Shanti Swarup Bhatnagar Prize, 2020?

- (A) Chemical Science
- (B) Physical Science
- (C) Medical Science
- (D) Mathematical Science
- (E) None of the above/More than one of the above

Ans: (C)

Solution: For Medical Sciences discipline, Dr. Bushra Ateeq and Dr. Ritesh Agarwal have been selected for Shanti Swarup Bhatnagar Prize, 2020.

#38. Who has been selected for the Nobel Peace Prize, 2020?

- (A) European Union
- (B) World Food Programme
- (C) Robert B. Wilson
- (D) Paul R. Milgrom
- (E) None of the above/More than one of the above

Ans: (B)

Solution: The Nobel Peace Prize 2020 was awarded to **United Nations World Food Programme (WFP)** “for its efforts to combat hunger, for its contribution to bettering conditions for peace in conflict-affected areas and for acting as a driving force in efforts to prevent the use of hunger as a weapon of war and conflict.”

#39. Which Indian Film actor has been included in the Time Magazine’s list of hundred most influential people of 2020?

- (A) Ayushmann Khurrana
- (B) Shahrukh Khan
- (C) Ajay Devgan
- (D) Sunny Deol
- (E) None of the above/More than one of the above

Ans: (A)

Solution: The TIME magazine's list of 100 most influential people for the year 2020 includes Prime Minister Narendra Modi, actor Ayushman Khurrana and Bilkis, who emerged as the face of the Shaheen Bagh protests.

#40. How many Indian beaches have been recommended for the Blue Flag Certification recently?

- (A) Six
- (B) Seven
- (C) Eight
- (D) Nine
- (E) None of the above/More than one of the above

Ans: (C)

Solution: India now has **10 International Blue** Flag beaches with the addition of Kovalam & Eden beaches this year and recertification for 8 beaches which got the tag in 2020.

#41. Ram Vilas Paswan started his political career from which political party?

- (A) Janata Party
- (B) Bharatiya Lok Dal
- (C) Samyukta Socialist Party
- (D) Praja Socialist Party
- (E) None of the above/More than one of the above

Ans: (C)

Solution: He started his political career as member of Samyukta Socialist Party and was elected to the Bihar Legislative Assembly in 1969.

#42. When Did the Election Commission of the India issue a Press Note for the General Election to the Legislative Assembly of Bihar, 2020?

- (A) 23rd September, 2020

- (B) 24th September, 2020
- (C) 25th September, 2020
- (D) 26th September, 2020
- (E) None of the above/More than one of the above

Ans: (C)

#43. In Which state, ‘Ghar Tak Fiber’ Scheme has been launched on 21st September, 2020 through video conference?

- (A) Uttar Pradesh
- (B) Madhya Pradesh
- (C) Bihar
- (D) Karnataka
- (E) None of the above/More than one of the above

Ans: (C)

Solution: The ‘Ghar Tak Fibre’ scheme is likely to connect villages of Bihar through which e-education, e-agriculture, telemedicine, tele-law, social security, and several government schemes can be accessed. ..

#44. Bihar Politician Late Raghuvansh Prasad Singh was for the first time elected to which Lok Sabha?

- (A) Tenth Lok Sabha
- (B) Eleventh Lok Sabha
- (C) Twelfth Lok Sabha
- (D) Thirteenth Lok Sabha
- (E) None of the above/More than one of the above

Ans: (B)

#45. Which among the following is not a member of the Quadrilateral Security Dialogue-an informal strategic forum?

- (A) India
- (B) Japan
- (C) China
- (D) Australia
- (E) None of the above/More than one of the above

Ans: (C)

Solution: QUAD or Asian NATO is an inter-governmental security forum established in 2007-08. The Quadrilateral Security Dialogue (QSD, also known as the Quad or QUAD) is a strategic dialogue **between the United States, India, Japan and Australia.**

#46. Who represented India's perspective in the Fifth BRICS Culture Ministers' Meeting held through a video conference in September 2020?

- (A) Prahlad Singh Patel
- (B) Ramesh Pokhriyal Nishank
- (C) Nitin Gadkari
- (D) Ravi Shankar Prasad
- (E) None of the above/More than one of the above

Ans: (A)

Solution: Prahlad Singh Patel addressed in 5th BRICS Culture Ministers Meeting held under Chairpersonship of Russia.

#47. Where was the 36th ASEAN Summit virtually held in June 2020?

- (A) Thailand
- (B) Singapore
- (C) Indonesia
- (D) Vietnam

(E) None of the above/More than one of the above

Ans: (D)

Solution: The 36th edition of the biannual ASEAN (Association of Southeast Asian Nations) Summit 2020 was held via video conferencing in Hanoi, Vietnam with theme “Cohesive and Responsive ASEAN”.

#48. Which of the following has topped in the Human Capital Index 2020?

(A) Japan

(B) South Korea

(C) Singapore

(D) Hong Kong

(E) None of the above/More than one of the above

Ans: (C)

Solution: In the first rankings, **Singapore** ranked first on the Human Capital Index in successive years of 2019 and 2020.

#49. Recently in USA, ‘Operation MAGA’ is related to

(A) Campaign against COVID-19

(B) Donald Trump’s re-election campaign

(C) Joseph Biden’s election Campaign

(D) ‘make army great again’ Campaign

(E) None of the above/More than one of the above

Ans: (B)

Solution: Make America Great Again” or MAGA is a campaign slogan used in American politics popularized by Donald Trump in his successful 2016 presidential campaign.

#50. Which Arab state has started first nuclear power plant?

(A) Iraq

- (B) Saudi Arabia
- (C) United Arab Emirates
- (D) Egypt
- (E) None of the above/More than one of the above

Ans: (C)

Solution: The Barakah nuclear power plant in **the Abu Dhabi emirate** is the first nuclear power station in the Arab world and part of the oil producing state's efforts to diversify its energy mix.

#51. Which was the first Arab State to sign peace deal with Israel?

- (A) Egypt
- (B) Jordan
- (C) Bahrain
- (D) Sudan
- (E) None of the above/More than one of the above

Ans: (A)

Solution: The Egypt–Israel treaty was signed by Egyptian president Anwar Sadat and Israeli prime minister Menachem Begin, and witnessed by United States president Jimmy Carter and was signed in Washington, D.C., United States on 26 March 1979, following the 1978 Camp David Accords.

#52. Which Country assumed the role of Chairman of the International Labour Organization's Governing Body for the period of October 2020 till June 2021?

- (A) Japan
- (B) New Zealand
- (C) Australia
- (D) India
- (E) None of the above/More than one of the above

Ans: (D)

Solution: India has assumed the Chairmanship of the Governing Body of International Labour Organization in 2020. Apurva Chandra, Secretary (Labour and Employment) has been elected as the Chairperson of the Governing Body of the ILO for the period October 2020-June 2021.

#53. ‘Operation My Saheli’ launched in September 2020 aims

- (A) to encourage self-defence education among girls
- (B) to boost the security of women Passengers in trains
- (C) to explore new job Opportunities for women
- (D) to boost awareness against girl Child Labour
- (E) None of the above/More than one of the above

Ans: (B)

Solution: Indian Railways has launched “Meri Saheli” initiative for **focused action on security of women across.**

#54. On the occasion of the first anniversary of the fit India Movement, Who gave the mantra, ‘Fitness ki Dose, Aadha Ghanta Roz (Fitness Dose, Half an Hour Daily)’?

- (A) Prime Minister Narendra Modi
- (B) Union Home Minister Amit Shah
- (C) Union Health Minister Dr. Harsh Vardhan
- (D) Yoga Guru Baba Ramdev
- (E) None of the above/More than one of the above

Ans: (A)

Solution: PM Modi coined the new fitness mantra, ‘Fitness ki Dose, Aadha Ghanta Roz’ which means to devote half an hour daily to fitness be it yoga, or badminton, tennis, or football, karate or kabaddi etc. to do at least 30 minutes daily.

#55. On the One Hundred Birth Anniversary of rajmata Vijaya Raje Scindia, Prime Minister Narendra Modi Released a

- (A) Fifty Rupees Coin
- (B) Fifty Rupees Note
- (C) One hundred Rupees Coin
- (D) One hundred Rupees Note
- (E) None of the above/More than one of the above

Ans: (C)

Solution: Prime Minister, Shri Narendra Modi released commemorative coin of Rs. 100 denomination to celebrate the Birth Centenary of Rajmata Vijaya Raje Scindia today through video conference.

#56. Which state's short documentary film, Chi Lupo has won Dada Saheb Phalke Award, 2020?

- (A) Manipur
- (B) Nagaland
- (C) Meghalaya
- (D) Arunachal Pradesh
- (E) None of the above/More than one of the above

Ans: (D)

Solution: it was a documentary of Arunachal Pradesh. Chi Lupo, documented by Kezang D Thongdok is a short film on honey hunting.

#57. Which private Sector Bank has Launched 'e-kisaan Dhan' app for farmers?

- (A) Axis Bank
- (B) HDFC Bank
- (C) IDBI Bank
- (D) Kotak Mahindra Bank
- (E) None of the above/More than one of the above

Ans: (B)

Solution: HDFC Bank has launched e-Kisaan Dhan application to provide value-added services such as mandi prices, weather forecast, latest farming news, information on seed varieties, e-pashuhaat.

#58. At the international airport of which city India launched its first COVID-19 testing facility?

- (A) Kolkata
- (B) Delhi
- (C) Mumbai
- (D) Bengaluru
- (E) None of the above/More than one of the above

Ans: (B)

Solution: India's first airport COVID testing facility at Delhi Airport was started for arriving international fliers.

#59. Rafale fighter aircraft has been formally inducted into the Indian Air Force at which Air Force Station?

- (A) Hindon
- (B) Sarsawa
- (C) Ambala
- (D) Amritsar
- (E) None of the above/More than one of the above

Ans: (C)

Solution: Rafale Fighter Air craft was formally inducted into the Indian Air Force (IAF) at a formal function at Air Force Station, Ambala.

#60. The name of India's first indigenous anti-radiation missile is

- (A) Tandav

- (B) Trinetra
- (C) Saksham
- (D) Rudram
- (E) None of the above/More than one of the above

Ans: (D)

Solution: The DRDO Anti-Radiation Missile or NGARM now officially named **Rudram-1** was successfully test-fired from Integrated Test Range (ITR), Balasore on 9 October 2020.

#61. In which of the following Harappan cities, furrows of ploughed fields have been found?

- A. Kalibangan
- B. Dholavira
- C. Mohenjo-daro
- D. Lothal
- E. None of the above/ More than one of the above

Ans: (A)

Solution: In Kalibangan, the Bangle factory, multiple crops on the same land, ploughed field were found here

#62. Triratna or Three Jewels i.e, right knowledge, right faith, and right action are related to which of the following?

- A. Buddhism
- B. Hinduism
- C. Jainism
- D. Christianity
- E. None of the above/ More than one of the above

Ans: (C)

Solution: The three principles of Jainism, also known as Triratnas, are:

- Right faith
- Right knowledge
- Right conduct

#63. Which of the following rulers convened the Fourth Buddhist Council in Kashmir

- A. Ashoka
- B. Ajatashatru
- C. Kanishka
- D. Kalashola
- E. None of the above/ More than one of the above

Ans: (C)

Solution: Fourth Buddhist Council was held in Kashmir under Kanishka.

#64. Which of the following philosophies of India propounded the atom theory?

- A. Yoga
- B. Nyaya
- C. Sankhya
- D. Vaisheshika
- E. None of the above/ More than one of the above

Ans: (D)

Solution: The Vaisheshika system holds that the smallest, indivisible, indestructible part of the world is an atom (anu).

#65. Which Delhi Sultan is known for adopting the 'Blood and Iron' policy?

- A. Iltutmish
- B. Balban

- C. Ala - ud- din Khalji
- D. Muhammad Bin Tughlaq
- E. None of the above/ More than one of the above

Ans: (B)

Solution: Balban followed the policy of 'blood and iron'. As per the policy, he used to be ruthless to the enemies.

#66. Which medieval Indian empire was famous for elaborated local self-government

- A. Chalukya
- B. Chola
- C. Solanki
- D. Parmar
- E. None of the above/ More than one of the above

Ans: (B)

Solution: Cholas were known for efficient local self-government system in place

#67. Pietra dura is related to which of the Following?

- (A) Decorating the walls with floral designs made of semi-precious stones
- (B) Building sloping walls in Minars
- (C) Use of arch in Construction
- (D) Use of marble in buildings
- (E) None of the above/More than one of the above

Ans: (A)

Solution: Pietra dura is a term for the technique of using cut and fitted, highly polished colored stones to create images. It is considered a decorative art.

#68. Which Mughal ruler established Karkhanas for painting?

- (A) Humayun
- (B) Akbar
- (C) Jahangir
- (D) Shah Jahan
- (E) None of the above/More than one of the above

Ans: (B)

Solution: Akbar established a separate department for painting. He started the concept of Karkhana. Karkhana is a Hindustani language word that means factory. These karkhanas were **small manufacturing units for various arts and crafts as well as for the emperor's household and military needs.**

#69. The dual system of governance in Bengal was enforced by

- (A) Warren Hastings
- (B) William Bentinck
- (C) Robert Clive
- (D) Lord Curzon
- (E) None of the above/More than one of the above

Ans: (C)

Solution: The system of Dual Government was **introduced in Bengal by Robert Clive.** It lasted from 1765 to 1772. Under this system, the administration of Bengal was divided into Nizamat and Diwani. The Diwani was carried out by the company and the Nizamat by the Nizam.

#70. Who established Swaraj Party in 1923?

- (A) Mahatma Gandhi
- (B) Vallabhbhai Patel
- (C) C. R. Das and Motilal Nehru
- (D) B. R. Ambedkar
- (E) None of the above/More than one of the above

Ans: (C)

Solution: The Swaraj Party was formed by **Motilal Nehru and Chittaranjan Das** in order to fight British colonialism from within.

They wanted to pressurize the government for various reforms. Keeping in mind these objectives this party was formed. They felt that the method of peaceful protest was not adequate enough for freedom.

#71. Who among the following participated in the Parliament of Religions held at Chicago in 1893?

- (A) Dayananda Saraswati
- (B) Swami Vivekananda
- (C) Mahatma Gandhi
- (D) Raja Rammohan Roy
- (E) None of the above/More than one of the above

Swami Vivekananda (1863–1902) is best known in the United States for his groundbreaking speech to the 1893 World's Parliament of Religions in which he introduced Hinduism to America and called for religious tolerance and an end to fanaticism.

#72. Who wrote the famous play, Neel Darpan in which oppression of indigo farmers is displayed?

- (A) Sharat Chandra Chatterjee
- (B) Rabindranath Tagore
- (C) Barindra Ghosh
- (D) Dinabandhu Mitra
- (E) None of the above/More than one of the above

Ans: (D)

Solution: By 1860 the regional grievances and localized acts of resistance among the peasantry resulted into a general uprising in nine Bengal districts. Later on that year **Dinabandhu Mitra** published a play, Neel-darpan, with the planters' atrocities as its theme.

#73. The famous Battle of Wandiwash in 1760 was fought by the British against whom?

- (A) The French
- (B) Spain
- (C) Mysore
- (D) Carnatic
- (E) None of the above/More than one of the above

Ans: (A)

Solution: Battle of Wandiwash, fought in Jan. 1760, is a confrontation between **the French, under the comte de Lally, and the British, under Sir Eyre Coote.**

The British forces under **Sir Eyre Coote**, defeated the French in the Battle of Wandiwash in 1760 and besieged Pondicherry. Hence, he got the title, "Hero of Wandiwash".

#74. Which of the following acts introduced separate electorate system in India?

- (A) The Regulating Act, 1773
- (B) The Charter Act, 1833
- (C) The Pitt's India Act, 1784
- (D) The Indian Councils Act, 1909
- (E) None of the above/More than one of the above

Ans: (D)

Solution: Also called as the Minto-Morley reforms were enacted in the year 1909, which provided the system of Separate Electorates in the legislation of British India.

#75. Kol Mutiny of 1831 under Buddho Bhagat took place in which of the following regions?

- (A) Kutch
- (B) Singhbhum

- (C) Western Ghats
- (D) Satara
- (E) None of the above/More than one of the above

Ans: (B)

Solution: The Kol rebellion was an indigenous revolt by the Kol people of **the Chota Nagpur region (Singhbhum)** in 1829-39. The rebel kols were under the leadership of Buddhu Bhagat, Madara Mahato, Joa Bhagat, and others.

It was a revolt of the adivasi Kol people as a reaction to economic exploitation brought on by the systems of land tenure and administration that had been introduced by the East India company.

#76. Who spearheaded the 1857 Revolt in Bihar?

- (A) Nana Saheb
- (B) Tatya Tope
- (C) Kunwar Singh
- (D) Maulavi Ahmadullah
- (E) None of the above/More than one of the above

Ans: (C)

Solution: Kunwar Singh was nearly eighty and in failing health lifted the arms against the British. He was assisted by both his brother, Babu Amar Singh, and his commander-in-chief, Hare Krishna Singh.

#77. Who drew Gandhiji's attention to the plight of Indigo peasants in Champaran?

- (A) Rajendra Prasad
- (B) Anugrah Narayan Sinha
- (C) Acharya Kripalani
- (D) Raj Kumar Shukhla
- (E) None of the above/More than one of the above

Ans: (D)

Solution: Raj Kumar Shukla persuaded Gandhi to go to Champaran and thus the Champaran Satyagraha began.

#78. Which was the first capital of ancient Mahajanapada Magadh?

- (A) Pataliputra
- (B) Vaishali
- (C) Champa
- (D) Anga
- (E) None of the above/More than one of the above

Ans: (E)

Solution: Its first capital was **Rajagriha (modern day Rajgir)**, then Pataliputra (modern Patna).

#79. Swami Sahajananda was related to which of the following?

- (A) Tribal Movement in Bihar
- (B) Labour Movement in Bihar
- (C) Peasant Movement in Bihar
- (D) Caste Movement in Bihar
- (E) None of the above/More than one of the above

Ans: (C)

Solution: The Kisan Sabha movement started in Bihar under the leadership of Sahajanand Saraswati who had formed in 1929 the Bihar Provincial Kisan Sabha (BPKS) in order to mobilize peasant grievances against the zamindari attacks on their occupancy rights, and thus sparking the farmers' movements in India.

#80. Which of the following was Gandhiji's first Satyagraha Movement in India in which he used Civil Disobedience?

- (A) Champaran
- (B) Kheda

- (C) Ahmedabad
- (D) Rowlatt Satyagraha
- (E) None of the above/More than one of the above

Ans: (A)

Solution: The principle of civil disobedience was first used in Champaran Satyagraha.

#81. The largest island of Japan in terms of the geographical area is

- (A) Hokkaido
- (B) Honshu
- (C) Shikoku
- (D) Kyushu
- (E) None of the above/More than one of the above

Ans: (B)

Solution: Honshu island is the largest island in Japan.

It contains the nation's highest mountain, **Mount Fuji**, and largest lake, **Lake Biwa**.



Honshu

#82. Greenland is a part of which one of the following countries?

- (A) Denmark
- (B) Finland
- (C) Canada
- (D) United Kingdom
- (E) None of the above/More than one of the above

Ans: (A)

Solution: In 1953 Greenland becomes an integral part of the **Kingdom of Denmark**.



#83. Which one of the following Countries of the world has the largest Indian Population as on December 2018?

- (A) United Arab Emirates
- (B) Malaysia
- (C) United Kingdom
- (D) United States of America
- (E) None of the above/More than one of the above

Ans: (D)

Solution: The United Arab Emirates was the top destination of Indian migrants followed by the US, Saudi Arabia, Pakistan and Oman till 2018. But, in the year 2018, USA was the leading destination.

#84. Among of the following countries which country has recorded the highest annual gold output (in tones) in 2019?

- (A) Russia
- (B) Australia
- (C) China
- (D) United States of America
- (E) None of the above/More than one of the above

Ans: (C)

Solution: China was the largest producer of gold in the world in 2019 and accounted for around 11 percent of total global production.

#85. Among the following continents which one has the highest number of countries?

- (A) Europe
- (B) Asia
- (C) Africa
- (D) North America
- (E) None of the above/More than one of the above

Ans: (C)

Solution: Africa comprises 54 countries.

#86. The State of India with the highest percentage of tribal population to its total population as per the 2011 Census is

- (A) Arunachal Pradesh
- (B) Nagaland
- (C) Mizoram
- (D) Meghalaya

(E) None of the above/More than one of the above

Ans: (C)

Solution: The state and UT of India with the highest percentage of the tribal population to its total population as per the 2011 census is **Mizoram(94.4 %)** and **Lakshadweep(94.8 %)**.

#87. Which one of the following coffee-growing areas is not in Karnataka?

(A) Chikmagalur

(B) Coorg

(C) Baba Budangin

(D) Pulneys

(E) None of the above/More than one of the above

Ans: (D)

Solution: Pulneys is in Tamil Nadu's coffee growing area. It is also famous for Kurinji flower which grows after 12 years. **Karnataka coffee production accounts for 71%**, Kerela 21% and Tamil Nadu 5%.

#88. Which one of the following districts of India is the largest in terms of Geographical area?

(A) Leh

(B) Kutch

(C) Jaisalmer

(D) Barmer

(E) None of the above/More than one of the above

Ans: (B)

Solution: According to Census 2011, the largest district in Indian is Kachchh (in terms of area).

#89. The State of India with maximum number of wildlife sanctuaries is

- (A) Karnataka
- (B) Tamil Nadu
- (C) Maharashtra
- (D) Madhya Pradesh
- (E) None of the above/More than one of the above

Ans: (C)

Solution: Maharashtra has the maximum number of wildlife sanctuaries. According to National Wildlife Database, Maharashtra has 48 wildlife sanctuaries.

Which Indian state has maximum number of national parks?

Madhya Pradesh has the highest number of national parks (9 Nos.).

#90. Which of the following rivers flowing in Bihar is a north flowing river?

- (A) Bagmati
- (B) Kamla
- (C) Kosi
- (D) Gandak
- (E) None of the above/More than one of the above

Ans: (E)

Solution: All rivers are south flowing rivers.



#91. Atal Tunnel is across which one of the following Himalayan Ranges?

- (A) Zaskar
- (B) Western Pir Panjal
- (C) Ladakh
- (D) Eastern Pir Panjal
- (E) None of the above/More than one of the above

Ans: (D)

Solution: The Atal Tunnel has been built under the Rohtang Pass in **the eastern Pir Panjal range** of the Himalayas on the Leh-Manali Highway. With 8.8 km length, the tunnel is the second longest road tunnel in India and has reduced the distance between Manali and Keylong by about 60 km.

#92. India's 13th major port is going to be set up in which states?

- (A) Kerala
- (B) Gujarat
- (C) Maharashtra
- (D) Tamil Nadu
- (E) None of the above/More than one of the above

Ans: (C)

Solution: There are **12 major ports** in the country – 6 on the eastern coast and 6 on the western coast. India recently approved to set up 13th major port of India, at Vadhavan in **Maharashtra**.

#93. Which one of the following states is a leading producer of solar energy in India?

- (A) Telangana
- (B) Karnataka
- (C) Andhra Pradesh

(D) Rajasthan

(E) None of the above/More than one of the above

Ans: (B)

Solution: Karnataka was the leading producer of solar energy when the exam was conducted but now its Gujarat.

#94. Among the following pairs of mineral and district, which one is correctly matched?

(A) Limestone – Kaimur

(B) Mica – Bhagalpur

(C) Quartzite – Madhubani

(D) Lead – zinc – Gaya

(E) None of the above/More than one of the above

Ans: (A)

Solution: Minerals in Bihar:

- **limestone: Kaimur** (Bhabhua), Munger and Rohtas districts,
- **Mica:** Nawada district
- **Quartz/ Silica sand:** Bhagalpur, Jamui, Monghyr and Nalanda districts,
- **Quartzite:** in Lakhisarai, Munger and Nalanda districts,
- **Talc/soapstone/ steatite:** Munger district.



Map of Bihar

#95. Which one of the following pairs of industry and Place is not correctly matched?

- (A) Oil refinery – Barauni
- (B) Cement – Banjari
- (C) Fertilizer – Bhaurahi
- (D) Wagon and engineering – Bhagalpur
- (E) None of the above/More than one of the above

Ans: (D)

Solution: Wagon engineering is in Muzaffarpur nearby railway station.

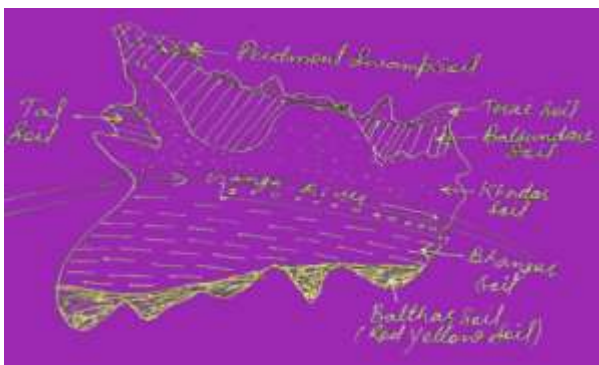
#96. Piedmont Swamp Soil is found only in which one of the following districts of Bihar?

- (A) Madhubani
- (B) Bhagalpur
- (C) West Champaran
- (D) Sitamarhi
- (E) None of the above/More than one of the above

Ans: (C)

Solution: There are three types of soil found in different regions of Bihar. They are:

- **Piedmont Swamp Soil:** This soil is found in the North-Western areas of the **West Champaran district**.
- **Terai Soil:** It is found in the Northern area of the state along the **Indo-Nepal border**.
- **Alluvial Soil:** This soil is found **in the plains of Bihar**.



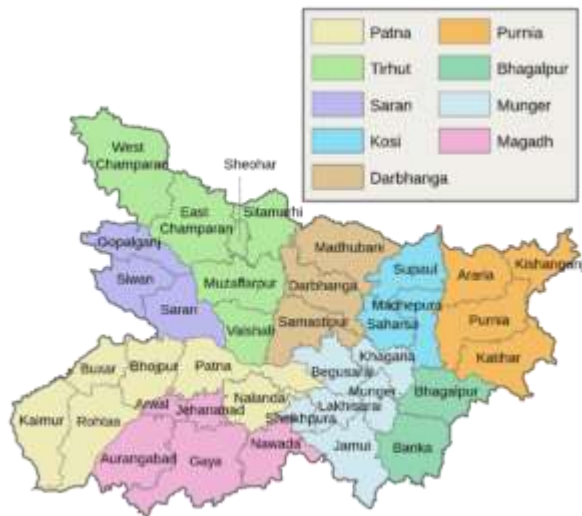
Soils in Bihar

#97. In Which one of the following pairs of Administrative Divisions of Bihar, Ganga river does not flow?

- (A) Darbhanga – Munger
- (B) Purnea – Bhagalpur
- (C) Tirhut – Saran
- (D) Kosi - Magadh
- (E) None of the above/More than one of the above

Ans: (D)

Solution: Ganga river does not flow from Kosi – Magadh. Ganga flows through the middle of Bihar.



Administrative Divisions of Bihar

#98. Among the following pairs of tribe and district, which one is not correctly matched?

- (A) Santhal – Banka
- (B) Munda – Jamui

- (C) Oraon – Supaul
(D) Kharwar – Bhagalpur
(E) None of the above/More than one of the above

Ans: (B)

Solution: Munda have their highest concentration in **Katihar districts** but they constitute only 4.3 per cent total tribal population of the district.

Source: <https://licchavilyceum.com/>

#99. What is the percentage of all types of forest area to the total geographical area of Bihar State?

- (A) 7.27
(B) 6.87
(C) 3.21
(D) 12.77
(E) None of the above/More than one of the above

Ans: (A)

Solution: Total Geographical area of Bihar: 94163 Sq. Km

- Total forest Area : 7288 Sq.km
- Forest area as a % of total area: 7.74 Percent.

#100. Which one of the following districts is having the only National Park of Bihar?

- (A) Nalanda
(B) Bhagalpur
(C) West Champaran
(D) East Champaran
(E) None of the above/More than one of the above

Ans: (C)

Solution: Valmiki National Park is a Tiger Reserve in the West Champaran District of Bihar, India. It is the only national park in Bihar.

#101. Who won the bid to construct the new Parliament building recently?

- (A) L&T Limited
- (B) Reliance Projects Limited
- (C) Tata Projects Limited
- (D) The National Highways Authority of India
- (E) None of the above/More than one of the above

Ans: (A)

Solution: The Tata Projects Limited on Wednesday won the bid to construct a new Parliament building at a cost of Rs 861.90 crore.

#102. which Article in the Indian Constitution is related with the establishment of the Election Commission of India?

- (A) Article 324
- (B) Article 148
- (C) Article 342
- (D) Article 325
- (E) None of the above/More than one of the above

Ans: (A)

Solution: Article 324 of the Constitution provides that the power of superintendence, direction and control of elections to parliament, state legislatures, the office of president of India and the office of vice-president of India shall be vested in the election commission.

#103. Who is the Head of the National Commission for women at present?

- (A) Mamta Sharma
- (B) Lalitha Kumaramangalam

(C) Rekha Sharma

(D) Smriti Irani

(E) None of the above/More than one of the above

Ans: (C)

Solution: Ms. Rekha Sharma assumed the charge of Chairperson, National Commission for Women on August 7, 2018. The National Commission for Women (NCW) is the statutory body of the Government of India, generally concerned with advising the government on all policy matters affecting women.

#104. What is meant by ‘Rule of Law’?

(A) One act for all and one judiciary for all

(B) One act for all and one State for all

(C) One State for all and one judiciary for all

(D) All acts for one and one judiciary for all

(E) None of the above/More than one of the above

Ans: (A)

Solution: The rule of law requires the government to exercise its power in accordance with well-established and clearly written rules, regulations, and legal principles. It also means that no man is supreme than law i.e. Law is supreme and also that every person irrespective of their position or power is subordinate to the laws and everyone comes under the jurisdiction of the courts in India.

#105. Which Article gives the list of 29 functions to be performed by the Panchayati Raj Institutions?

(A) Article 243(H)

(B) Article 243(E)

(C) Article 243(F)

(D) Article 243(G)

(E) None of the above/More than one of the above

Ans: (D)

Solution: The 11th Schedule (Article 243G) of Indian Constitution was added in 1992 by the 73rd Constitution Amendment Act. This schedule contains 29 subjects.

#106. When Was the citizenship (Amendment) Act passed?

- (A) 11th December, 2018
- (B) 11th December, 2019
- (C) 11th October, 2019
- (D) 11th October, 2020
- (E) None of the above/More than one of the above

Ans: (B)

#107. The legislative Origins of the 73rd Constitutional Amendments Act can be traced back to which Constitutional Amendment Bill?

- (A) 61st Constitutional Amendment Bill
- (B) 62nd Constitutional Amendment Bill
- (C) 63rd Constitutional Amendment Bill
- (D) 64th Constitutional Amendment Bill
- (E) None of the above/More than one of the above

Ans: (D)

#108. Which company established its factory in 1632 at Patna, Bihar?

- (A) British East India Company
- (B) Dutch East India company
- (C) Portuguese East India Company
- (D) French East India Company
- (E) None of the above/More than one of the above

Ans: (B)

Solution: Dutch East India Company established their factory at Patna in 1632 which is now the place is known for Patna College. Portugese were first to enter Bihar.

#109. Which one of the following is not the characteristic of decentralization?

- (A) Autonomy
- (B) People's Participation
- (C) To instil non-confidence among local Communities
- (D) To empower local communities
- (E) None of the above/More than one of the above

Ans: (C)

Solution: Decentralization means local communities has certain power and autonomy to local communities/governments to perform basic functions and perform ground duties to apply government schemes . And to 'Instil non-confidence among local communities' is not the characteristic of decentralisation and it shows no confidence on government function and local authorities.

#110. Which Act is not the landmark in the development of the Constitution during the British Rule?

- (A) The Regulating Act, 1773
- (B) The Charter Act, 1833
- (C) The Government of India Act. 1919
- (D) The Protection of Civil Rights Act. 1955
- (E) None of the above/More than one of the above

Ans: (D)

Solution: Protection of Civil Rights Act, 1955 : **An Act to prescribe punishment for the preaching and practice of Untouchability for the enforcement of any disability arising and for connected matters.**

#111. Which one among the following is not an objective of food management India?

- (A) Distribution of food grains

- (B) Procurement of food grains
- (C) Maintenance of food grains buffer Stock
- (D) Export of food grains
- (E) None of the above/More than one of the above

Ans: (D)

Solution:

The Food Corporation of India was setup under the Food Corporation Act 1964 for food management on large scale and to fulfill following objectives of the Food Policy :

- Effective price support operations for safeguarding the interests of the farmers.
- Distribution of food grains throughout the country for public distribution system
- Maintaining satisfactory level of operational and buffer stocks of food grains to ensure National Food Security.

#112. Revenue deficit in India implies that

- (A) the Indian Government needs to borrow in order to finance its expenses which will create capital assets
- (B) the Indian Government needs to borrow in order to finance its expenses which do not create capital assets
- (C) the Indian Government needs to borrow from the Reserve Bank of India against government securities
- (D) the Indian Government needs to borrow from international financial institutions
- (E) None of the above/More than one of the above

Ans: (B)

Solution: A revenue deficit, not to be confused with a fiscal deficit, **measures the difference between the projected amount of income and the actual amount of income.** If a business or government has a revenue deficit that means its income isn't enough to cover its basic operations i.e. day to day functions of government. To remedy a revenue deficit, a government can choose to raise tax or cut expenses. Similarly, a company with a revenue deficit can make improvements by cutting variable costs, such as materials and labor.

A **fiscal deficit** is a shortfall in a government's income compared with its spending. The government that has a fiscal deficit is spending beyond its means. A government creates a fiscal deficit by spending more money than it takes in from taxes and other revenues excluding debt. The gap between income and spending is closed by government borrowing.

#113. Which one of the following countries is India's top trading partner in 2019-20?

- (A) USA
- (B) China
- (C) UAE
- (D) Saudi Arabia
- (E) None of the above/More than one of the above

Ans: (A)

Solution: In 2019-20, the bilateral trade between the USA and India stood at USD 88.75 billion as against USD 87.96 billion in 2018-19.

#114. Which of the following infrastructure sectors of India is related with Bharatmala Project?

- (A) Telecom Sector
- (B) Railways
- (C) Road Infrastructure
- (D) Port Sector
- (E) None of the above/More than one of the above

Ans: (C)

Solution: Bharatmala, under Ministry of Road Transport and Highways, Government of India, is an umbrella program for **the highways sector** in India that focuses on optimizing efficiency of freight & passenger movement across the country by bridging critical infrastructure gaps

#115. Which of the following agencies release the index industrial production to measure Industrial Performance in India?

- (A) The National Sample Survey Office (NSSO)
- (B) The Reserve Bank of India (RBI)
- (C) The Central Statistics Office (CSO)

(D) The Indian Statistical Institute (ISI)

(E) None of the above/More than one of the above

Ans: (C)

Solution: The IIP index is computed and published by the **Central Statistical Organisation (CSO)** on a monthly basis.

#116. According to the Ease of Doing Business Report, 2020, India improved their rank from

(A) 77 in previous year to 63rd position

(B) 130 in previous year to 100th position

(C) 100 in previous year to 77th position

(D) 77 in previous year to 67th position

(E) None of the above/More than one of the above

Ans: (A)

Solution: Ease of Doing Business 2020 is a report published by The World Bank to 'Compare Business Regulation in 190 Economies'. India has ascended to 63rd position in the said report.

<https://licchavilyceum.com/>

#117. To improve institutional agricultural credits flow, what credit target for 2020-21 has been fixed in the Union Budget of India?

(A) Rs. 10 lakh crore

(B) Rs. 13.5 lakh crore

(C) Rs. 15 lakh crore

(D) Rs. 16.5 lakh crore

(E) None of the above/More than one of the above

Ans: (A)

Solution: The target for ground level credit for agriculture for the year 2020-21 was fixed at **Rs. 15.00 lakh crore** and going by the trend, it is likely that the target would be surpassed.

#118. The Objective of PM-KUSUM Scheme is

- (A) to reduce farmers' dependence on monsoon for irrigation
- (B) to reduce farmers' dependence on moneylenders for credit
- (C) promotion of floriculture in India
- (D) to remove farmers' dependence on diesel and kerosene and to link pump sets to solar energy
- (E) None of the above/More than one of the above

Ans: (D)

Solution: Pradhan Mantri Kisan Urja Suraksha evam Utthaan Mahabhiyan (PM-KUSUM) Scheme has an objective of increasing farmers' income, provide reliable source for irrigation and de-dieselise the farm sector and aimed at ensuring reliable day time power supply for irrigation, reducing subsidy burden on Discoms and providing additional sources of income to the farmers.

#119. Which of the following commercial banks of India comes in top 100 global banks?

- (A) ICICI Bank
- (B) SBI
- (C) HDFC Bank
- (D) Kotak Mahindra Bank
- (E) None of the above/More than one of the above

Ans: (B)

Solution: State Bank of India (SBI) at the 55th position is the only bank in the global top 100 list. china has 18 and USA has 12 banks in the list.

#120. The Government of India announced a new scheme 'NIRVIK' in the Budget for 2020-21. Which of the following sectors of economy will take the benefit from this scheme?

- (A) Agriculture sector
- (B) Industrial Sector
- (C) Health Sector
- (D) Export Sector
- (E) None of the above/More than one of the above

Ans: (D)

Solution: The NIRVIK Scheme (also known as **Niryat Rin Vikas Yojana**) is a scheme for small-scale exporters under the Export Credit Guarantee Corporation of India (ECGC) in order to ease lending of loans and enhance credit availability.

#121. Bihar Government has introduced the comprehensive Financial Management System (CFMS) on 1st April, 2019. This System

- (A) will make all financial activities in the state online and paperless
- (B) will solve the problem of NPA of banks
- (C) will ensure effective implementation of State projects
- (D) will manage State Government finance including local bodies
- (E) None of the above/More than one of the above

Ans: (A)

Solution: CFMS -Benefits to State Govt.

- Effective and efficient monitoring and control of state revenue and expenditure
- By efficient management of funds
- By monitoring and controlling government liabilities
- By monitoring ways and means position Real time financial position of state finances by On-line updation and consolidation of Receipts & Payments

#122. The government of India conferred the Krishi Karman Award to Bihar State on 2nd January, 2020. This award was given for

- (A) Production and productivity of maize and wheat
- (B) food grain production
- (C) production of rice

(D) production of oilseeds

(E) None of the above/More than one of the above

Ans: (A)

Solution: Bihar has been awarded Krishi Karman Award for excellence in production of Maize in 2016-17 and Wheat in 2017-18.

Bihar has received this fifth award. For the first time in 2011-12, Bihar got Krishi Karman Award for rice production. Under this award, an amount of two crore rupees, trophy and citation are given.

#123. Bihar government launched a new scheme ‘Satat Jivikaparjan Yojana’ in August 2018. The Objective of this scheme is

(A) to provide unemployment allowance to youth

(B) to provide employment in rural areas through local bodies

(C) to provide sustainable income generating assets to extremely poor households

(D) to provide free training for skill upgradation of youth

(E) None of the above/More than one of the above

Ans: (C)

Solution: The objective of this programme is to **empower ultra-poor households traditionally engaged in production, transportation and selling of country liquor/toddy; ultra-poor from SC/ST and other communities through diversification of livelihoods, capacity building and improved access to finance.**

#124. Which of the following is not included in Seven Resolves (Saat Nishchay) of Bihar Government?

(A) Women Employment

(B) Clean Drinking Water

(C) Supply of electricity to all households

(D) Child Welfare

(E) None of the above/More than one of the above

Ans: (D)

Solution:

Bihar Saat Nischay Yojana Part 1

1. Aarthik Hal, Yuvaonko Bal
2. Aarakshit Rozgar, Mahilaon Ko Adhikar
3. Har Ghar Bijli, Lagatar
4. Har Ghar Nal Ka Jal
5. Ghar Tak Pakki Gali – Naaliyan
6. Shauchalay Nirmaan, Ghar Ka Sammaan
7. Avsar Badhe, Aage Padhein

Bihar Saat Nischay Yojana Part 2

1. Employment And Skill Development of Youth
2. Education for Students
3. Women Empowerment
4. Agriculture and Irrigation
5. Cleanliness
6. Infrastructure
7. Cleanliness

#125. The per capita Net State Domestic Product at constant prices for Bihar is less than the country. In the year 2018-19, it was

- (A) 75 percent of the national average
- (B) 60 percent of the national average
- (C) 50 percent of the national average
- (D) 33 percent of the national average
- (E) None of the above/More than one of the above

Ans: (D)

Solution: Bihar's per capita net state domestic product (NSDP) was **Rs 30,617** for the year 2018-2019 compared to the country's Net Domestic Product which was Rs. 92,565 in the same time period.

#126. In which of the following colleges Gandhiji has studied?

- (A) Samaldas College, Bhavnagar
- (B) Dharmendrasinhji College, Rajkot
- (C) Gujarat College, Ahmedabad
- (D) Bahauddin College, Junagadh
- (E) None of the above/More than one of the above

Ans: (A)

Solution: In January 1888, he enrolled at Samaldas College in Bhavnagar State, then the sole degree-granting institution of higher education in the region. But he dropped out and returned to his family in Porbandar.

<https://licchavilyceum.com>

#127. Which of the following persons had participated actively in the revolt of 1857?

- (A) Nana Saheb (Kanpur)
- (B) Begum Hazrat Mahal (Lucknow)
- (C) Maulavi Ahmadullah (Faizabad)
- (D) Begum Zeenat Mahal (Delhi)
- (E) None of the above/More than one of the above

Ans: (E)

Solution:

Important leader Associated with the Revolt of 1857

Place	Leader
Barrackpore	Mangal Pandey
Delhi	Bahadur Shah II, General Bakht Khan
Delhi	Hakim Ahsanullah (Chief advisor to Bahadur Shah II)

Lucknow	Begum Hazrat Mahal, Birjis Qadir, Ahmadullah (advisor of the ex-Nawab of Awadh)
Kanpur	Nana Sahib, Rao Sahib (nephew of Nana), Tantia Tope, Azimullah Khan (advisor of Nana Sahib)
Jhansi	Rani Laxmibai
Bihar (Jagdishpur)	Kunwar Singh, Amar Singh
Allahabad and Banaras	Maulvi Liyakat Ali
Faizabad	Maulvi Ahmadullah (He declared the Revolt as Jihad against English)
Farrukhabad	Tufzal Hasan Khan
Bijnaur	Mohammad Khan
Muradabad	Abdul Ali Khan
Bareilly	Khan Bahadur Khan
Mandsor	Firoz Shah
Gwalior/Kanpur	Tantia Tope
Assam	Kandapreshwar Singh, Manirama Datta
Orissa	Surendra Shahi, Ujjwal Shahi
Kullu	Raja Pratap Singh
Rajasthan	Jaidayal Singh and Hardayal Singh
Gorakhpur	Gajadhar Singh
Mathura	Sevi Singh, Kadam Singh

#128. About which Act, Jawaharlal Nehru Had said, “We were provided with a car with all brakes and no engine”?

- (A) Act of 1858
- (B) Act of 1909
- (C) Act of 1919
- (D) Act of 1935
- (E) None of the above/More than one of the above

Ans: (D)

Solution: About Act of 1935 Act, Jawaharlal Nehru had said, “We were provided with a car with all brakes and no engine”.

#129. For how many days did Dandi March last?

- (A) 10 Days
- (B) 20 Days

(C) 24 Days

(D) 30 Days

(E) None of the above/More than one of the above

Ans: (C)

Solution: The **twenty-four day** march lasted from 12 March 1930 to 6 April 1930 as a direct action campaign of tax resistance and nonviolent protest against the British salt monopoly.

#130. Who is the author of the popular song, sarfaroshi Ki Tamanna Ab Hamare Dil Mein Hai?

(A) Surya Sen

(B) Chandra shekhar Azad

(c) Sardar Bhagat Singh

(D) Ram Prasad Bismil

(E) None of the above/More than One of the above

Ans: (E)

Solution: Sarfaroshi Ki Tamanna is an Urdu patriotic poem written by Bismil Azimabadi as an ode to young freedom fighters of the Indian independence movement.

#131. Which movement was started as a reaction to the Partition of Bengal?

(A) Non-Cooperation Movement

(B) CviI Disobedience Movement

(C) Swadeshi Movement

(D) Puma Swaraj Movement

(E) None of the above/More than one of the above

Ans: (C)

Solution: Against the Partition of Bengal, Extremists organised **the Swadeshi Movement and the Boycott of British goods**. The partition led to the growth of revolutionaries and the agitation in Bengal against British Government spread throughout the country. In 1905, Lord Curzon divided Bengal into two provinces.

#132. Who among the following advocates had appeared for the INA trials at Delhi in 1945-46?

- (A) Dr. Rajendra Prasad
- (B) Bhulabhai Desaj
- (C) K. M. Munshi
- (D) Sardar Patel
- (E) None of the above/More than one of the above

Ans: (B)

Solution: It included famous lawyers of the time, including Bhulabhai Desai, Asaf Ali, Jawaharlal Nehru, Tej Bahadur Sapru, Kailash Nath Katju and Lt. Col Horilal Varma Bar at Law.

#133. Where did Madam Cama unfurl India's tricolour flag of freedom?

- (A) Paris
- (B) London
- (C) Stuttgart
- (D) Geneva
- (E) None of the above/More than one of the above

Ans: (C)

Solution: Bhikaji Cama unfurled the first version of the Indian national flag—a tricolour of green, saffron, and red stripes—at **the International Socialist Congress held at Stuttgart, Germany**, in 1907.

#134. Which of the following pairs is correct?

- (A) Vinoba Bhave – Second Individual Satyagrahi
- (B) C. R. Das – Deshbandhu
- (C) William Wedderburn – Congress President in 1907

(D) Shyamji Krishna Varma – Founder of India House in Paris

(E) None of the above/More than one of the above

Ans: (B)

Solution: Chittaranjan Das is remembered as ‘Deshbandhu’, or ‘friend of the nation’.

#135. Which day was declared as ‘Purna Swaraj Day’ by the Indian National Congress?

(A) 26-01-1930

(B) 15-08-1947

(C) 30-01-1948

(D) 31-12-1950

(E) None of the above/More than one of the above

Ans: (A)

Solution: The Purna Swaraj resolution—proclaimed on **January 26, 1930**, later to be celebrated as independent India’s Republic Day—called for “complete freedom from the British” but was later interpreted by Prime Minister Nehru as permitting India to remain within the British Commonwealth, a practical concession young Jawaharlal.

#136. When was Bihar established?

A) 1911

(B) 1912

(C) 1913

(D) 1914

(E) None of the above/More than one of the above

Ans: (B)

Solution: On 22 March 1912, Bihar was carved out as a separate province in the British Indian Empire carved out from Bengal.

#137. In Tinkathia System in Bihar, how much land was to be reserved for indigo cultivation?

- (A) 01/10
- (B) 01/03
- (C) 03/20
- (C) 03/20
- (E) None of the above/More than one of the above

Ans: (C)

Solution: Tinkathia was the system under which the native peasants of Champaran (Bihar) were forced to cultivate **three kathaa Indigo out of every 20 kathaa** (Bigha) of land.

#138. Who was the first Chief Minister of Bihar?

- (A) Shri Krishna Singh
- (B) Satya Pal Malik
- (C) Nitish Kumar
- (D) Rabri Devi
- (E) None of the above/More than one of the above

Ans: (A)

Solution: Shri Krishna Sinha was the first chief minister of Bihar.

#139. Where was the first Congress Session in Bihar held?

- (A) Patna
- (B) Gaya
- (C) Muzaffarpur
- (D) Darbhanga
- (E) None of the above/More than one of the above

Ans: (A)

Solution: In 1912, Indian National Congress held its 27th session at Bankipore under the Presidency of Rao Bahadur Raghunath Narasinha Mudholkar .

#140. Which title was given to Jayprakash Naryan?

- (A) Praja Hitechhu
- (B) Lok Nayak
- (C) Lokmanya
- (D) Rashtra Nayak
- (E) None of the above/More than one of the above

Ans: (B)

Solution: Jayaprakash Narayan or Lok Nayak was an Indian independence activist, theorist, socialist and political leader. He is remembered for leading the mid-1970s opposition against Prime Minister Indira Gandhi, for whose overthrow he had called for a “total revolution”.

His biography, Jayaprakash, was written by his nationalist friend and the writer of Hindi literature, Rambriksh Benipuri.

In 1999, he was posthumously awarded the Bharat Ratna, India’s highest civilian award, in recognition of his social service. Other awards include the Magsaysay award for Public Service in 1965.

#141. The missing number in the sequence 4, 18, 48, 100, ?, 294, 448 is

- (A) 94
- (B) 164
- (C) 164
- (D) 192
- (E) None of the above/More than one of the above

Ans: (C)

#142. If $2nC3 : nC2 = 44 : 3$, then the value of n is

- (A) 1
- (B) 6
- (C) 11
- (D) 11
- (E) None of the above/More than one of the above

Ans: (B)

#143. If the average of m numbers is n^2 and that of n numbers is m^2 , then the average of $m + n$ numbers is

- (A) n/m
- (B) m/n
- (C) mn
- (D) $m - n$
- (E) None of the above/More than one of the above

Ans: (C)

#144. In a group of athletic teams in a school, 21 are in the basketball team, 26 in the hockey team and 29 in the football team. If 14 play hockey and basketball, 12 play hockey and football, 8 play all the three games, then how many play football only?

- (A) 10
- (B) 29
- (C) 21
- (D) 18
- (E) None of the above/More than one of the above

Ans: (A)

#145. Mohan can do a bit of work in 25 days which can be completed by Sohan in 20 days. Both together labour for 5 days and afterward Mohan leaves off. How long will Sohan take to complete the remaining work?

- (A) 20 days
- (B) 11 days
- (C) 14 days
- (D) 21 days
- (E) None of the above/More than one of the above

Ans: (B)

#146. A Clock is started at 12:00 noon. By 10 minutes past 5:00, the hour hand has turned through

- (A) 1350
- (B) 1450
- (C) 1550
- (D) 1650
- (E) None of the above/More than one of the above

Ans: (C)

#147. Which one of the following cannot be the square of a natural number?

- (A) 26569
- (B) 143642
- (C) 30976

(D) 28561

(E) None of the above/More than one of the above

Ans: (B)

#148. Given that

$$217x + 131y = 913$$

$$131x + 217y = 827$$

Then x and y are respectively

(A) 5 and 7

(B) 3 and 2

(C) -5 and -7

(D) 2 and 5

(E) None of the above/More than one of the above

Ans: (B)

#149. $((598 + 479)^2 - (598 - 479)^2) / 598 \times 479 = ?$

(A) 4

(B) 10

(C) 132

(D) 8

(E) None of the above/More than one of the above

Ans: (A)

#150. The Population of a town is 176400. If it increases annually at the rate of 5%, then what will be its Population after two years?

(A) 194481

(B) 296841

(C) 394481

(D) 396841

(E) None of the above/More than one of the above

Ans: (A)